



STRUCTURAL NOTES

PROPOSED INSTALLATION TO BE STRUCTURALLY ANALYZED BY PROFESSIONAL ENGINEER LICENSED IN THE STATE OF NEW YORK.

ANTENNA AZIMUTH	
ALPHA	115°
BETA	220°
GAMMA	330°



5701 SOUTH SANTA FE DRIVE
LITTLETON, CO 80120

IT IS A VIOLATION OF LAW FOR ANY PERSON, UNLESS THEY ARE ACTING UNDER THE DIRECTION OF A LICENSED PROFESSIONAL ENGINEER, TO ALTER THIS DOCUMENT.

DRAWN BY:	CHECKED BY:	APPROVED BY:
AH	HW	LM

RFDS REV #: _____ TBD

LEASE EXHIBIT

SUBMITTALS		
REV	DATE	DESCRIPTION
A	05/27/21	ISSUED FOR REVIEW

SDG PROJECT NUMBER
21DCC032

DISH WIRELESS PROJECT NUMBER
NYNYC01487B
160 WOOSTER STREET
NEW YORK, NY 10012

SHEET TITLE
PARTIAL ROOF PLAN

SHEET NUMBER
LE-1

WEST HOUSTON STREET

PROPOSED DISH ANTENNAS AND EQUIPMENT
(2 ANTENNAS, 4 RRHs, AND 1 OVP)
(GAMMA SECTOR, 330° AZIMUTH)

PROPOSED DISH CABLE ENTRY HOOD

PROPOSED EQUIPMENT LOCATED IN EXISTING ABANDONED
EQUIPMENT ROOM WITHIN WATER TANK BULKHEAD
(97 SQ FT)

PROPOSED DISH ANTENNAS AND EQUIPMENT
(2 ANTENNAS, 4 RRHs, AND 1 OVP)
(ALPHA SECTOR, 115° AZIMUTH)

EXISTING FURNITURE (TYP)

EXISTING HVAC EQUIPMENT
(TYP)

EXISTING FENCE (TYP)

EXISTING RAILING (TYP)

ROOF VENT (TYP)

~MAIN ROOF~

~LOWER ROOF~

~LOWER ROOF~

~UPPER ROOF~

GAMMA SECTOR

ALPHA SECTOR

BETA SECTOR

EXISTING HVAC UNIT
EXISTING WATER TANK LADDER

EXISTING WATER TANK

ROOF VENT (TYP)

EXISTING SKYLIGHT

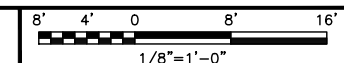
EXISTING LADDER

PROPOSED DISH ANTENNAS AND EQUIPMENT
(2 ANTENNAS, 4 RRHs, AND 1 OVP)
(BETA SECTOR, 220° AZIMUTH)

- NOTES:
- EXHIBITS SUBMITTED ARE A CONCEPTUAL REPRESENTATION OF THE LEASE AGREEMENT ONLY. ACTUAL CONSTRUCTION DOCUMENTATION MAY VARY TO COMPLY WITH ALL APPLICABLE CODES.
 - FINAL ANTENNA LOCATIONS AND HEIGHTS ARE PENDING APPROVAL FROM THE NYC LPC.
 - FINAL UTILITY EQUIPMENT TO BE DETERMINED/VERIFIED BY THE LOCAL UTILITY PROVIDER.
 - DISH TO UTILIZE EXISTING ABANDONED ELECTRIC AND GROUND CONDUITS FOR PROPOSED INSTALLATION.
 - PROPOSED DISH FIBER CONDUIT TO FOLLOW EXISTING ROUTE TO EQUIPMENT ROOM WITHIN WATER TANK BULKHEAD



PARTIAL ROOF PLAN



STRUCTURAL NOTES

PROPOSED INSTALLATION TO BE STRUCTURALLY ANALYZED BY PROFESSIONAL ENGINEER LICENSED IN THE STATE OF NEW YORK.



5701 SOUTH SANTA FE DRIVE
LITTLETON, CO 80120

IT IS A VIOLATION OF LAW FOR ANY PERSON, UNLESS THEY ARE ACTING UNDER THE DIRECTION OF A LICENSED PROFESSIONAL ENGINEER, TO ALTER THIS DOCUMENT.

DRAWN BY: AH CHECKED BY: HW APPROVED BY: LM

RFDS REV #: TBD

LEASE EXHIBIT

SUBMITTALS		
REV	DATE	DESCRIPTION
A	05/27/21	ISSUED FOR REVIEW

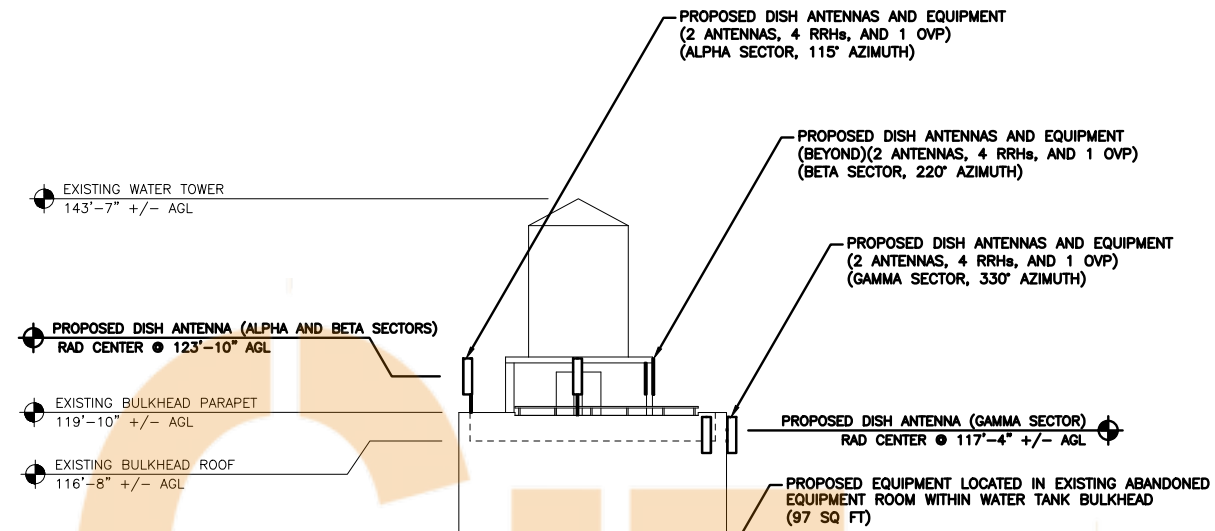
SDG PROJECT NUMBER
21DCC032

DISH WIRELESS PROJECT NUMBER
NYNYC01487B
160 WOOSTER STREET
NEW YORK, NY 10012

SHEET TITLE
ELEVATION

SHEET NUMBER

LE-2



EXISTING BUILDING ROOF
68'-7" +/- AGL



GRADE: 0'-0" +/- AGL

ELEVATION

